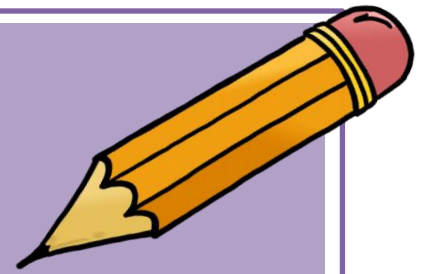




Year 2

Enriching Learning

2024 Spring Term 1



The following links will help you to work on some of the key learning for Maths and English this term. **With an adult's help, you can choose which areas you most need to practise and when and how long you spend on them.** If you are very confident, you should try the diving activities. If you need to develop your confidence, try the swimming activities. If you think you need to develop skills, have a go at the paddling activities.

Maths Focus: Multiplication and Division

Paddling:

[Curious George . Fair Shares | PBS KIDS](#)
[Doggy Division Dinners \(ictgames.com\)](#)

Swimming:

[Coconut Multiples - Reinforce Times Tables \(topmarks.co.uk\)](#)

Diving:

[Hit the Button - Quick fire maths practice for 6-11 year olds \(topmarks.co.uk\)](#)

English Focus: Adjectives, Verbs and Nouns

Paddling:

http://www.funenglishgames.com/grammargames/verbno_unadjective.html

Swimming:

http://www.lancsngfl.ac.uk/curriculum/literacy/lit_site/html/fiction/my_monster/index.htm

Diving:

<https://www.topmarks.co.uk/Flash.aspx?e=spelling-grammar02>

Reading Reminder: This term, we would like you to try and read for 5-10 minutes every day. You can read by yourself, or you can read with an adult. Ask them to record your reading in your reading diary. Remember that reading two books on the same day still counts as one night's reading! ☺

The following links will help you to develop your understanding of our topic this term and with topic homework activities.

Topic Focus: London's Burning! – Useful links

Fire Safety:

[Homepage | Sparky.org](#)

[Fire Safe Kids!](#)

[Learning resources | London Fire Brigade \(london-fire.gov.uk\)](#)

Great Fire of London:

[Game - The Great Fire of London](#)

[Fire! Fire! exhibition tour for schools | Museum of London](#)

[Who was Samuel Pepys? - BBC Bitesize](#)

[The Grisly Great Fire of London Special - CBBC - BBC](#)

Each week, you need to choose one of these activities to complete and hand in on Wednesday in your homework book. Make sure you choose a range of activities (some from each box) during the term.

English Activities:



- Samuel Pepys kept a diary of the events during The Great Fire of London. Keep your own diary for a weekend and write about all the things you do.
- Design a job advertisement for a fire fighter.

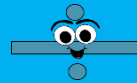


- Write a list of instructions on how to bake bread.
- Write some sentences warning people of the dangers of fire.
- Use your senses to write a poem on The Great Fire of London.



Maths Activities:

- As we are practising counting in 10s, can you think of a fun way to show the ten times tables? Think about things that come in 10s.
- Have a go at working out some multiplication and division calculations. Can you remember which sign to use for which? Have a go at using different methods and explore what helps you.



- Set up your own shop. Create prices for various items, such as your toys or teddies. Invite your family members to your store. How much will each family member spend?!
- Visit the local bakery and buy something. Can you work out what money you need to buy the item? Can you work out how much change you would get?



- Don't forget to log onto Mathletics or TT Rockstars to try the Maths games!

Topic Activities:



- Create a painting or collage of a scene from the Great Fire of London. Which landmarks could you choose to draw or paint?
- Design an apron for a baker. Think about the materials you would use and any useful pockets/compartments a baker might need!
- Write your own verse to the song 'London's Burning.' You could even record yourself singing it!
- Research about Samuel Pepys! What can you find out about his story? Present this however you like (poster, leaflet, Powerpoint, story, picture strip, information sheet, song.)
- Burning energy - what exercise do you do each day? Make a list of all the activities you do over the week.
- Test how effective your smoke alarms are by seeing how clearly you can hear them from different places in your house. Write a short report showing what you found out.
- Make a model of a church or house in London in 1666.



Eco Challenge - Biodiversity: Take a trip to your local woodland or park make a list and/or picture of the different animals and wildlife you see.